

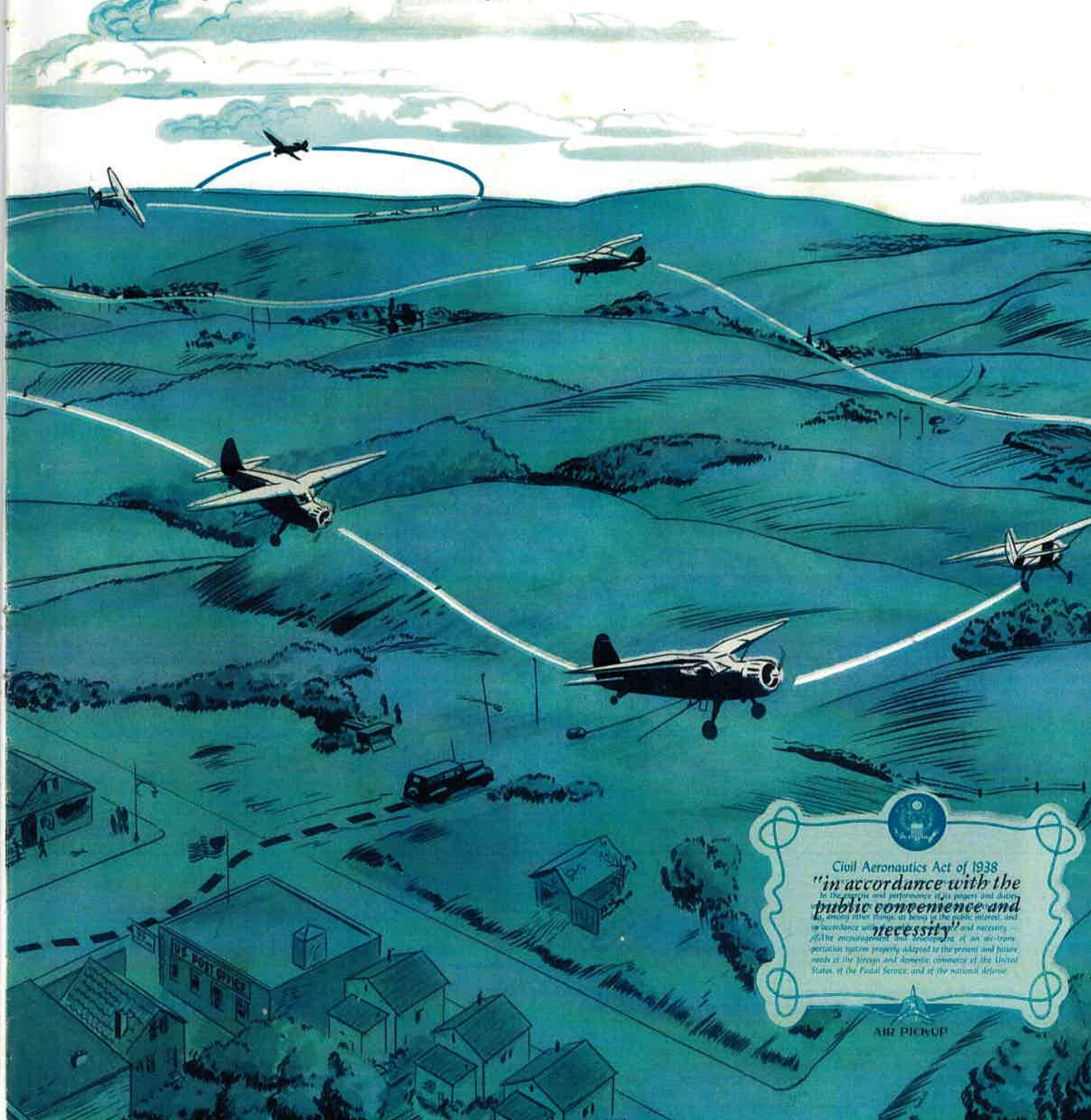
Office, and drives to the station site. He rigs a portable station for the pick-up. Over a company radio in his car he receives complete information on the operation of the flight, either from the company's radio towers or direct from the plane.

The Pick-Up station is set up in about two minutes. The Pick-Up plane comes in. It swoops over the station, drops a cargo container and picks up an outgoing container. In a few seconds the plane

is out of sight, headed for another pick-up.

A few minutes later, usually in less time than the messenger can store his station equipment and return to the Post Office and express agency, the Pick-Up plane is at the next station.

Note in the panorama that the Pick-Up plane swings far to the left and right of a direct course. On the ground this would mean extra hours of travel. By air, it is a matter of minutes.




Civil Aeronautics Act of 1938
"in accordance with the
public convenience and
in the interest and performance of its proper and duty
in, among other things, in being in the public interest and
in accordance with the public interest and
necessity"
The encouragement and development of an air-transportation system properly adapted to the present and future needs of the foreign and domestic commerce of the United States, of the Postal Service, and of the national defense.

AIR PICKUP